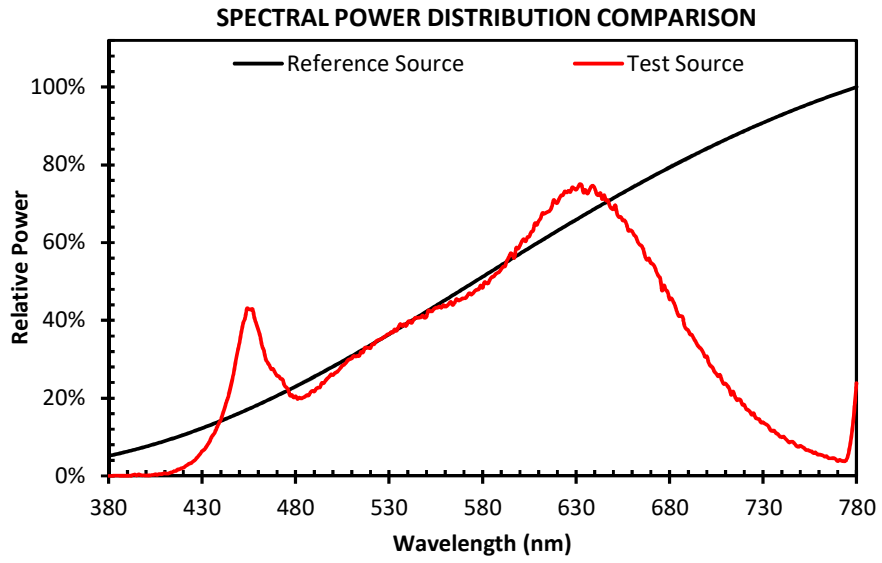


Source: Xicato XOB 6mm Vibrant 95 3000K

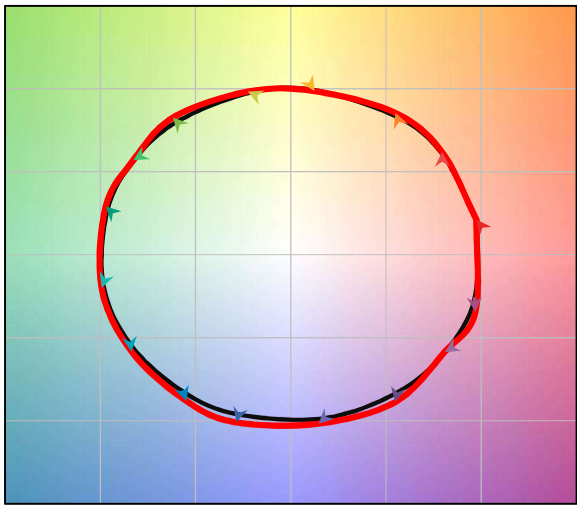
### Test Source

$R_f$	94
$R_g$	103
CCT (K)	2960
$D_{uv}$	-0.0075
$x$	0.4290
$y$	0.3832
CIE $R_a$	96

0

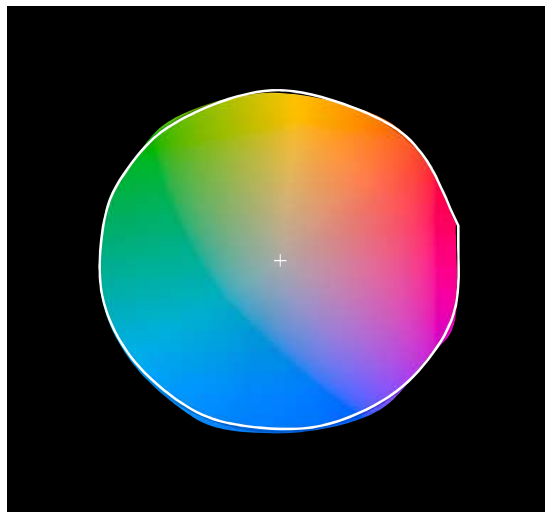


#### COLOR VECTOR GRAPHIC

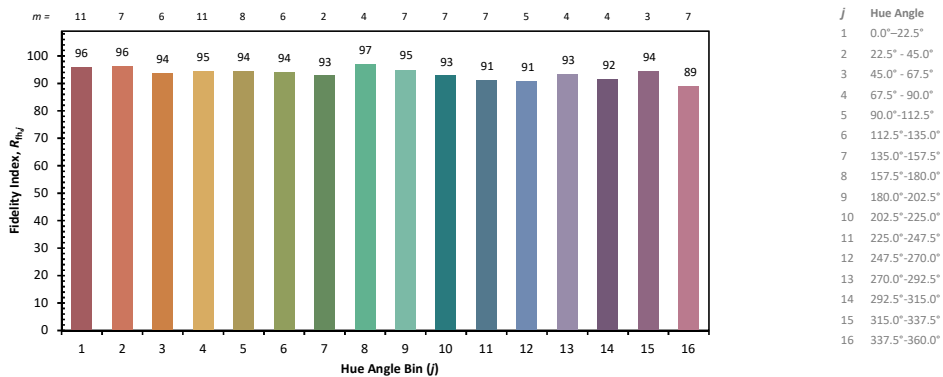


— Reference Illuminant — Test Source

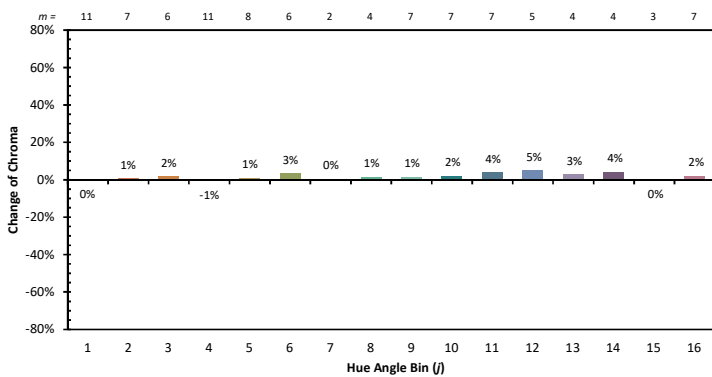
#### COLOR DISTORTION GRAPHIC



**Color Rendition by Hue**

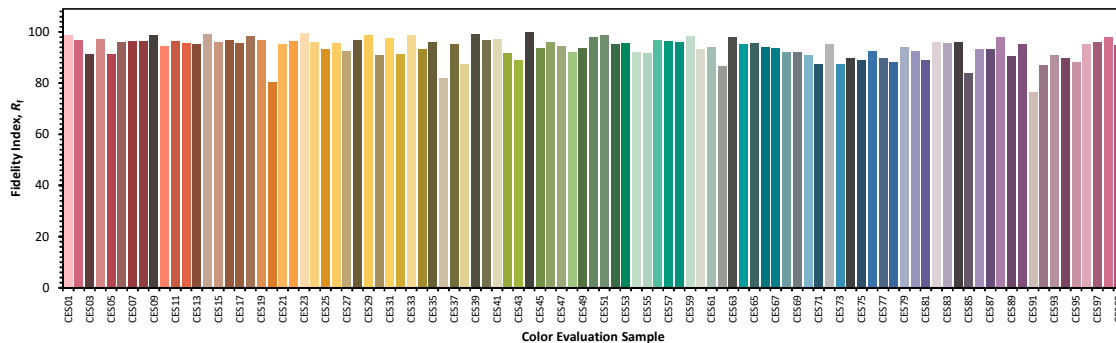


This chart displays the average Fidelity Index for all samples within the hue bin. The number of samples per bin, which can vary based on the CCT used for the calculation, is shown at the top. The color of the bar is based on the average chromaticity under the 5000 K reference illuminant; the colors may not display accurately depending on the calibration of the monitor, and should be used for orientation only.



This chart displays the change in chroma for the average sample within each hue bin. The number of samples per bin, which can vary based on the CCT used for the calculation, is shown at the top. The color of the bar is based on the average chromaticity under the 5000 K reference illuminant; the colors may not display accurately depending on the calibration of the monitor, and should be used for orientation only.

**Color Fidelity by Sample**



This chart displays the Fidelity Index for each of the 99 CES. The CES are arranged by their hue angle under the 5000 K reference source, which was also used to determine the color of each bar. The colors are approximate and depend on proper monitor calibration. Some colors may be outside of the gamut of the monitor, and will not be displayed accurately.